



**YANCHENG SLONG MACHINERY & ELECTRIC CO., LTD**

Add: 6 Youyi Road, Dafeng Industrial Park, Changzhou

Hi-tech Zone. Dafeng, Jiangsu, China.

Tel: 0086-515-66661132, 66661261, 83608889

Fax: 0086-515-83608885, 66661192

Email: sharon@slongco.com

<http://www.slongco.com>, <http://ycslong.en.alibaba.com>



**PRODUCTS  
CATALOGUE**

**Vision No. 5**

# ABOUT US

## **YANCHENG SLONG MACHINERY & ELECTRIC CO., LTD.**

established in 2007, is a professional manufacturer engaged in the research and development, production, sale and service of engines, generators & water pumps etc. We are located in YANCHENG city with convenient transportation access

We possess strong ability of Research & Development, Advanced Quality Control System, professional Quality Inspection Centre and we have an experienced term. We have obtained the certificates of ISO, CE etc. Our annual production output has reached 200,000 unit and our products have been exported to more than 20 countries and areas with high reputation.

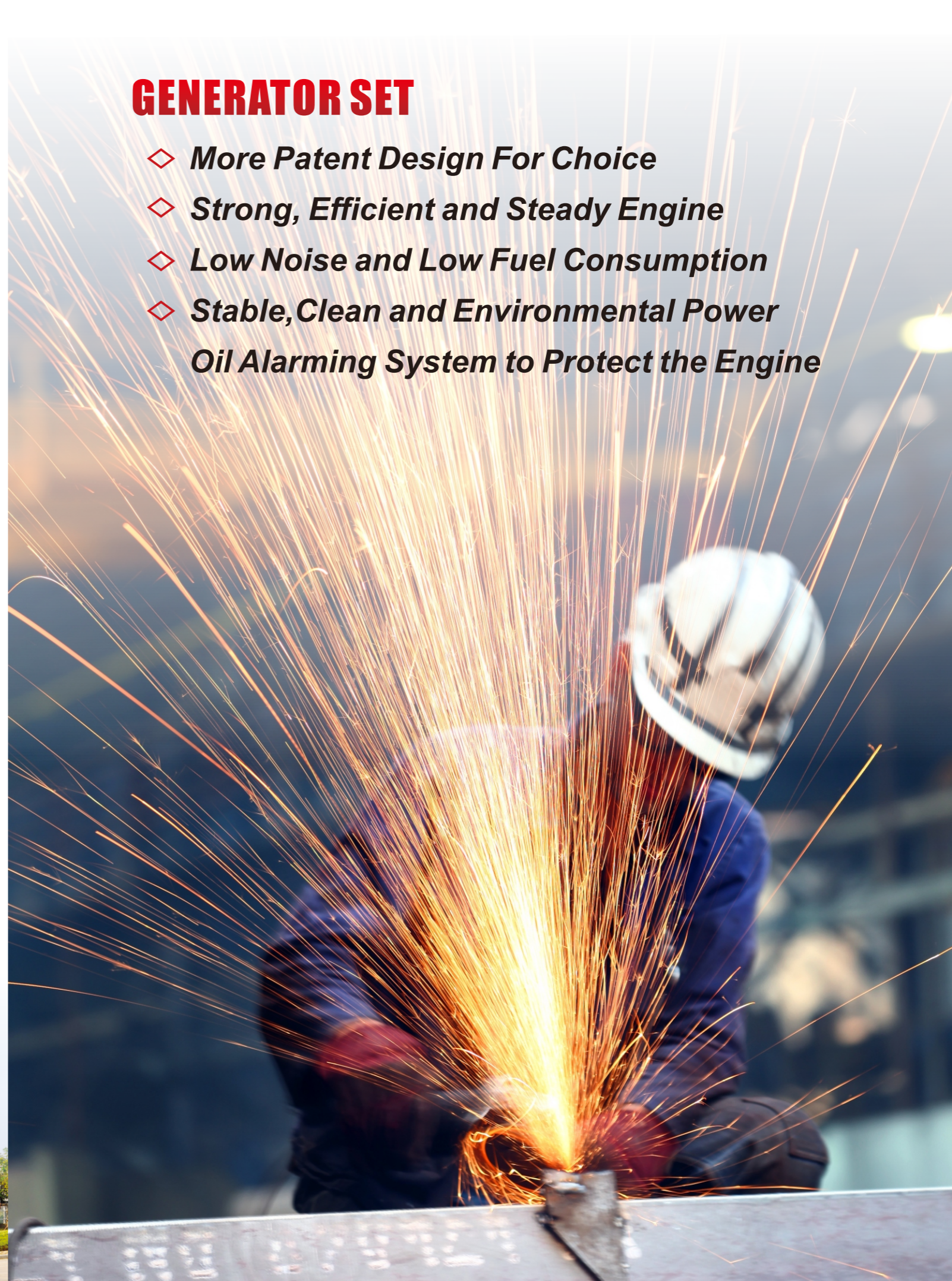
We hope to establish long-term business relationship with customers from all over the world based on the sincere cooperation. Excellent quality and customer satisfaction are our eternal pursuit.

SLONG



## **GENERATOR SET**

- ◇ *More Patent Design For Choice*
- ◇ *Strong, Efficient and Steady Engine*
- ◇ *Low Noise and Low Fuel Consumption*
- ◇ *Stable, Clean and Environmental Power*
- Oil Alarming System to Protect the Engine*



# SPECIAL GENERATOR

## Dual Fuel Generator

MODEL	SL8000E-DF	SL9000E-DF
Rated frequency	60HZ	60HZ
Rated AC Voltage	120V	120V
Rated AC output	7.0KW(gasoline), 6.0kw(LPG)	8.0KW(gasoline), 7.0kw(LPG)
Max AC output	8.0KW(gasoline), 7.0kw(LPG)	9.0KW(gasoline), 8.0kw(LPG)
DC output	12V-8.3A	12V-8.3A
Power Factor	1.0	1.0
Engine model	SL420	SL440
Displacement	420ml	438ml
Max Power Output	15.0/3600 hp/rpm	17.0/3600 hp/rpm
Starting system	Recoil start or E-start	Recoil start or E-start
Fuel tank capacity	30 L	30 L
Continuous operation	12 h at half load when running on gasoline	
Oil	SF or Higher Grade	SF or Higher Grade
Net weight	89 Kg	91 Kg
Packing Size	765 × 715 × 715mm	765 × 715 × 715mm
20FT/40HQ	63/135	63/135



## Gasoline Welding Generator



MODEL		GGW130A	GGW200A
Generator	Welding frequency	50Hz	50Hz
	Current regulation range	DC 50-130A ±5%	DC 50-200A ±5%
	Rated welding current	DC 120A±5%/24.8V	DC 180A±5%/27.2V
	Voltage	220V	220V
	Loading ratio	60%	60%
Welding	Welding rod	1.6-3.2mm	1.6-5.0mm
	Type	Brush, Single-Phase, AVR	
	Frequency	50Hz	50Hz
	Rated Ac Voltage	220V	220V
Engine	Rated/Max.power	2.5/2.8kW	5.0/5.5kW
	Engine	SL225	SL420
	Displacement	223cc	420cc
	Max Power Output	7.5/3600 hp/rpm	15.0/3600 hp/rpm
	Fuel tank capacity	3.6L	6.5L
Complete Generator Parameters	Oil	SF or Higher Grade	SF or Higher Grade
	Dimensions	650 × 480 × 515mm	700 × 530 × 590mm
	Net Weight	50 Kg	90 Kg
	20FT/40HQ	225/470	140/292



MODEL		SL-130A	SL-300A
DC Welder Generator	Welding Mode	Manual Arc Welding	Manual Arc Welding
	No Load Voltage	65 V	65 V
	Welding Voltage	22-28 V	22-28 V
	Welding Current	50-160A	50-230A
	Continued Load Running Rate	60%	60%
	Auxiliary Power Output	DC, 230 V, 400 W	DC, 230 V, 800 W
	Welding Electrode Size	2.5-4.0 mm	2.5-5.0 mm
Engine	Engine Model	SL225	SL420
	Displacement	223 cc	420 cc
	Starting Method	Recoil or E-start	Recoil or E-start
	Fuel Tank / Oil Capacity	3.6L/0.6L	6.5L/1.1L
Welder Generator Parameters	Gross / Net Weight	38 / 36 Kg	56 / 54 Kg
	Packing Size L×W×H	505 × 430 × 550 mm	570 × 535 × 570 mm
	20FT/40HQ	220/460	160/360

# SPECIAL GENERATOR

## 3 in 1 Gasoline Generator



MODEL		SL6500E-WGC
Generator	Type	Brush, Single-Phase, AVR
	Frequency	60Hz
	Rated Ac Voltage	120V/240V
	Rated/Max.AC Output	5.0/5.5KVA
Welding	Rated Current	50A-200A
	No-load voltage	60-80V
	Working Frequency	60Hz
	Welding Current Range	50%
	Electrode Diameter	1.6-5.0mm
Compressor	Air Tank Capacity	18L
	Rated AC Voltage	220V
	Frequency	60Hz
	PSI @ 40	5.2CFM
Engine	PSI @ 90	4.2CFM
	MAX PSI	115
	Model	SL420
	Displacement	420ML
	Max. Output	15/3600 HP/rpm
	Oil/Fuel Tank Capacity	1.1L/25L
	Continuous Operating Hours	8HRS
	Oil	SF or Higher Grade
	Starting Syetem	Electric start
	Complete Generator Parameters	Overall Dimension L X W X H
Net/Gross Weight		140/150 Kg
20FT/40HQ		48/156

## Double Voltage Integrated Gasoline Generator

MODEL	SL3000E-DVI	SL10000E-DVI
Rated frequency	50Hz / 60Hz	50Hz / 60Hz
Rated AC Voltage	220V / 380V	220V / 380V
Rated AC output	15.7-27.2 / 17.1-29.5 A	21.0-36.2 / 23.5-40.0 A
Max AC output	6.0/6.5KW	8.0 / 9.0 KW
DC output	Single Phase / Three Phase	Single Phase / Three Phase
Power Factor	AVR	AVR
Engine model	SL420	SL460
Displacement	420 CC	458 CC
Max Power Output	15.0/3600 hp/rpm	18.0/3600 hp/rpm
Starting system	Recoil /Electric Key Start	Recoil /Electric Key Start
Fuel tank capacity	1.1L / 30L	1.1L / 30L
Continuous operation	8 Hours	7 Hours
Oil	SF or Higher Grade	SF or Higher Grade
Net weight	98 / 103 Kg	100 / 105 Kg
Packing Size	704 × 605 × 635 mm	704 × 605 × 635 mm
20FT/40HQ	108/228	108/228



# DIESEL & LPG GENERATOR

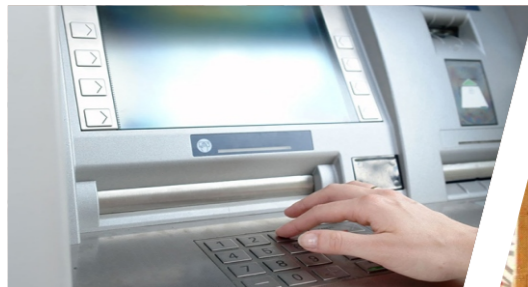
**Diesel & LPG generator - A Super-economical dual fuel Generator, it is very suitable for those markets where LPG price is lower.**

MODEL	DG6500LDE-LPG
Engine model	Air cooled 186FAE diesel engine
Displacement	418 ml
Rated frequency	50HZ
Rated AC Voltage	220 V
Rated AC output	5.0 KW
Max AC output	5.5 KW
DC output	12V-8.3A
Power Factor	1
Starting system	Electric Start
Fuel tank capacity	16 L
Fuel	Diesel & LPG
Fuel Consumption 80% load	1.37 kg/h ( diesel fuel only)
Dual fuel consumption @80% load	0.312 kg/h Diesel 1.4 M <sup>3</sup> /h LPG
Substitution rate	77%
Dual fuel can save cost	40%-45%
Noise Level at 7m	≤74dB(A)
Net weight	155 KG
Packing Size	950 x 565 x 770 mm
20FT/40HQ	72/144



### OUTSTANDING ADVANTAGES:

- › Lower running cost.
- › Less pollution, Clean and friendly environment.
- › The two fuels can be converted freely to meet different application scenarios.



ATM



Mobile dining car



Small restaurant



Caravan



Construction site



Household power supply

# GASOLINE GENERATOR

MODEL	SL1500	SL1800
Rated frequency	50HZ	50HZ
Rated AC Voltage	220V	220V
Rated AC output	0.85KW	0.95KW
Max AC output	1.0KW	1.1KW
DC output	12V-8.3A	12V-8.3A
Power Factor	1.0	1.0
Engine model	SL156	SL156
Displacement	98.5ml	98.5ml
Starting system	Recoil start or E-start	Recoil start or E-start
Fuel tank capacity	6 L	6 L
Oil	SF or Higher Grade	SF or Higher Grade
Net weight	26 Kg	27 Kg
Packing Size	465×365×420mm	465×365×420mm
20FT/40HQ	400/960	400/960



# GASOLINE GENERATOR

MODEL	SL2500	SL3000
Rated frequency	50HZ	50HZ
Rated AC Voltage	220V	220V
Rated AC output	2.0KW	2.5KW
Max AC output	2.3KW	2.8KW
DC output	12V-8.3A	12V-8.3A
Power Factor	1.0	1.0
Engine model	SL200	SL200
Displacement	196ml	196ml
Starting system	Recoil start or E-start	Recoil start or E-start
Fuel tank capacity	15 L	15 L
Oil	SF or Higher Grade	SF or Higher Grade
Net weight	46.5 Kg	47 Kg
Packing Size	605×460×470mm	605×460×470mm
20FT/40HQ	225/475	225/475

MODEL	SL3500	SL3800
Rated frequency	50HZ	50HZ
Rated AC Voltage	220V	220V
Rated AC output	2.8KW	3.1KW
Max AC output	3.1KW	3.5KW
DC output	12V-8.3A	12V-8.3A
Power Factor	1.0	1.0
Engine model	SL210	SL225
Displacement	212ml	223ml
Starting system	Recoil start or E-start	Recoil start or E-start
Fuel tank capacity	18 L	18 L
Oil	SF or Higher Grade	SF or Higher Grade
Net weight	48 Kg	49 Kg
Packing Size	620×475×485mm	620×475×485mm
20FT/40HQ	180/420	180/420



# GASOLINE GENERATOR

MODEL	SL4500	SL6500
Rated frequency	50HZ	50HZ
Rated AC Voltage	220V	220V
Rated AC output	3.5KW	5.0KW
Max AC output	3.8KW	5.5KW
DC output	12V-8.3A	12V-8.3A
Power Factor	1.0	1.0
Engine model	SL270	SL390
Displacement	270ml	389ml
Starting system	Recoil start or E-start	Recoil start or E-start
Fuel tank capacity	25 L	25 L
Oil	SF or Higher Grade	SF or Higher Grade
Net weight	75 Kg	90 Kg
Packing Size	698×530×590mm	698×530×590mm
20FT/40HQ	140/292	140/292

MODEL	SL8000	SL9000
Rated frequency	50HZ	50HZ
Rated AC Voltage	220V	220V
Rated AC output	6.0KW	7.0KW
Max AC output	6.5KW	7.5KW
DC output	12V-8.3A	12V-8.3A
Power Factor	1.0	1.0
Engine model	SL420	SL440
Displacement	420ml	438ml
Starting system	Recoil start or E-start	Recoil start or E-start
Fuel tank capacity	25 L	25 L
Oil	SF or Higher Grade	SF or Higher Grade
Net weight	92 Kg	95 Kg
Packing Size	700×580×600mm	700×580×600mm
20FT/40HQ	96/272	96/272



# GASOLINE GENERATOR

# POWERED BY HONDA

MODEL	SL9500E	SL10000E
Rated frequency	50HZ	50HZ
Rated AC Voltage	220V	220V
Rated AC output	7.5KW	8.0KW
Max AC output	8.0KW	8.5KW
DC output	12V-8.3A	12V-8.3A
Power Factor	1.0	1.0
Engine model	SL440V	SL460
Displacement	438ml	459ml
Starting system	Recoil start or E-start	Recoil start or E-start
Fuel tank capacity	40 L	40 L
Oil	SF or Higher Grade	SF or Higher Grade
Net weight	100 Kg	102 Kg
Packing Size	940×580×740mm	940×580×740mm
	20FT/40HQ	72/150



MODEL	SL2500-H	SL3000-H	SL6500-H
Rated frequency	50HZ	50HZ	50HZ
Rated AC Voltage	220V	220V	220V
Rated AC output	2.0KW	2.5KW	5.0KW
Max AC output	2.3KW	2.8KW	5.5KW
DC output	12V-8.3A	12V-8.3A	12V-8.3A
Power Factor	1.0	1.0	1.0
Engine model	GP160 (Honda)	GP200 (Honda)	GX390 (Honda)
Displacement	163ml	196ml	389ml
Starting system	Recoil start or E-start	Recoil start or E-start	Recoil start or E-start
Fuel tank capacity	15 L	15 L	25 L
Oil	SF or Higher Grade	SF or Higher Grade	SF or Higher Grade
Net weight	46.5 Kg	47 Kg	82 Kg
Packing Size	605×460×470mm	605×460×470mm	698×530×590mm
	20FT/40HQ	225/475	225/475

MODEL	SL12000E-H	SL13500E-H
Rated frequency	50HZ	50HZ
Rated AC Voltage	220V	220V
Rated AC output	9.0KW	10.0KW
Max AC output	10.0KW	11.0KW
DC output	12V-8.3A	12V-8.3A
Power Factor	1.0	1.0
Engine model	GX630 (Honda)	GX690 (Honda)
Displacement	688ml	688ml
Starting system	Electric start	Electric start
Fuel tank capacity	25 L	25 L
Oil	SF or Higher Grade	SF or Higher Grade
Net weight	162 Kg	165 Kg
Packing Size	960×660×860mm	960×660×860mm
	20FT/40HQ	42/126



MODEL	SL12000E
Rated frequency	50HZ
Rated AC Voltage	220V
Rated AC output	8.5KW
Max AC output	10.0KW
DC output	12V-8.3A
Power Factor	1.0
Engine model	SL2V78FE
Displacement	678ml
Starting system	Electric start
Fuel tank capacity	25 L
Oil	SF or Higher Grade
Net weight	160 Kg
Packing Size	960×660×860mm
	20FT/40HQ



MODEL	WP20-H	WP30-H
Engine Model	GP160 (Honda)	GP200 (Honda)
Displacement	163 cc	196 cc
Fuel Tank Capacity	3.6 L	3.6 L
Max power	5.5hp/3600rpm	6.5hp/3600rpm
Pump type	Aluminum Aelf Priming Pump	Aluminum Aelf Priming Pump
Inlet diameter	50 mm	80 mm
Outlet Diameter	50 mm	80 mm
Max Suction Head	6 m	6 m
Max Lift Head	28 m	30 m
Max Flow	30 m³/hr	60 m³/hr
Oil	SF or Higher Grade	SF or Higher Grade
Net weight	26 Kg	28 Kg
Packing Size	485×390×455mm	525×390×455mm
	20FT/40HQ	360/840

# GASOLINE SILENT GENERATOR

MODEL	SL3500W-SE	SL6500W-SE
Rated frequency	50HZ	50HZ
Rated AC Voltage	220V	220V
Rated AC output	2.5KW	5.0KW
Max AC output	2.8KW	5.5KW
DC output	12V-8.3A	12V-8.3A
Power Factor	1.0	1.0
Engine model	SL210	SL390
Displacement	212ml	389ml
Starting system	Electric start	Electric start
Fuel tank capacity	16 L	18 L
Oil	SF or Higher Grade	SF or Higher Grade
Noise Level at 7m	≤65dB(A)	≤67dB(A)
Net weight	110 Kg	144 Kg
Packing Size	900x552x740mm	950x570x780mm
20FT/40HQ	78/156	72/144

# GASOLINE SILENT GENERATOR



MODEL	SL8000W-SE	SL9000W-SE	SL10000W-SE
Rated frequency	50HZ	50HZ	50HZ
Rated AC Voltage	220V	220V	220V
Rated AC output	6.0KW	7.0KW	8.0KW
Max AC output	6.5KW	7.5KW	8.5KW
DC output	12V-8.3A	12V-8.3A	12V-8.3A
Power Factor	1.0	1.0	1.0
Engine model	SL420	SL440	SL460
Displacement	420ml	438ml	459ml
Starting system	Electric start	Electric start	Electric start
Fuel tank capacity	25 L	25 L	25 L
Oil	SF or Higher Grade	SF or Higher Grade	SF or Higher Grade
Noise Level at 7m	≤68dB(A)	≤69dB(A)	≤70dB(A)
Net weight	148 Kg	152 Kg	156 Kg
Packing Size	950x570x780mm	950x570x780mm	950x570x780mm
20FT/40HQ	72/144	72/144	72/144

MODEL	SL12000W-SE	SL15000W-SE
Rated frequency	50HZ	50HZ
Rated AC Voltage	220V	220V
Rated AC output	8.5KW	15.0KW
Max AC output	10.0KW	16.0KW
DC output	12V-8.3A	12V-8.3A
Power Factor	1.0	1.0
Engine model	2V78FE	2V90F
Displacement	678ml	999ml
Starting system	Electric start	Electric start
Fuel tank capacity	40 L	40 L
Oil	SF or Higher Grade	SF or Higher Grade
Noise Level at 7m	≤74dB(A)	≤76dB(A)
Net weight	200 Kg	225 kg
Packing Size	1170x715x1000mm	1310x780x1240mm
20FT/40HQ	32/64	12/54



# KEROSENE GENERATOR

# DIESEL SILENT GENERATOR

MODEL	SL1500KL
Rated frequency	50HZ
Rated AC Voltage	220V
Rated AC output	0.8KW
Max AC output	0.9KW
DC output	12V-8.3A
Power Factor	1.0
Engine model	SL156K
Displacement	98.5ml
Starting system	Recoil start or E-start
Fuel tank capacity	Kerosene 0.6L, Gasoline 5L
Oil	SF or Higher Grade
Net weight	26.5 Kg
Packing Size	465×365×390mm
20FT/40HQ	470/960



MODEL	DG6500LDE
Rated frequency	50HZ
Rated AC Voltage	220 V
Rated AC output	4.5 KW
Max AC output	5.0 KW
DC output	12V-8.3A
Power Factor	1.0
Engine model	SL186FAE
Bore × Stroke	86 × 72 mm
Displacement	418 ml
Starting system	Electric Starting
Fuel tank capacity	16 L
Noise Level at 7m	≤77dB(A)
Net weight	155 KG
Packing Size	950 x 565 x 770 mm
20FT/40HQ	72/144



MODEL	SL2500KL	SL3000KL
Rated frequency	50HZ	50HZ
Rated AC Voltage	220V	220V
Rated AC output	2.0KW	2.5KW
Max AC output	2.3KW	2.8KW
DC output	12V-8.3A	12V-8.3A
Power Factor	1.0	1.0
Engine model	SL200K	SL210K
Displacement	196ml	212ml
Starting system	Recoil start or E-start	
Fuel tank capacity	Kerosene 1.0L, Gasoline 14L	
Oil	SF or Higher Grade	
Net weight	46.5 Kg	47.5 Kg
Packing Size	605×460×470mm	605×460×470mm
20FT/40HQ	225/475	225/475

MODEL	DG7500LDE
Rated frequency	50 HZ
Rated AC Voltage	220 V
Rated AC output	5.5 KW
Max AC output	6.0 KW
DC output	12V-8.3A
Power Factor	1.0
Engine model	SL190FB
Bore × Stroke	90 × 75 mm
Displacement	477 ml
Starting system	Electric Starting
Fuel tank capacity	16 L
Noise Level at 7m	≤77dB(A)
Net weight	158 KG
Packing Size	950 x 565 x 770 mm
20FT/40HQ	72/144



MODEL	SL6500KL
Rated frequency	50HZ
Rated AC Voltage	220V
Rated AC output	5.0KW
Max AC output	5.5KW
DC output	12V-8.3A
Power Factor	1.0
Engine model	SL420K
Displacement	420ml
Starting system	Recoil start or Electric start
Fuel tank capacity	Kerosene 1.6L, Gasoline 23.4L
Oil	SF or Higher Grade
Net weight	86 Kg
Packing Size	698×530×590mm
20FT/40HQ	140/292



MODEL	DG9000LDE
Rated frequency	50 HZ
Rated AC Voltage	220 V
Rated AC output	7.5 KW
Max AC output	8.0 KW
DC output	12V-8.3A
Power Factor	1.0
Engine model	SL1100F
Bore × Stroke	100 × 85 mm
Displacement	668 ml
Starting system	Electric Starting
Fuel tank capacity	25 L
Noise Level at 7m	≤78dB(A)
Net weight	260 KG
Packing Size	1140*640*900mm
20FT/40HQ	72/144